



Preferred Partner

Enterprise Storage at an Affordable Price.



SCALE COMPUTING

Storage Grid 100 Appliance



Scale Computing's Build-a-Grid architecture is the most versatile and easily scalable storage solution on the market. With a supercomputing core and a low per TB cost, storage can be purchased as you need it, when you need it. Below are the features of our **Storage Grid 100 & 200 appliance**.

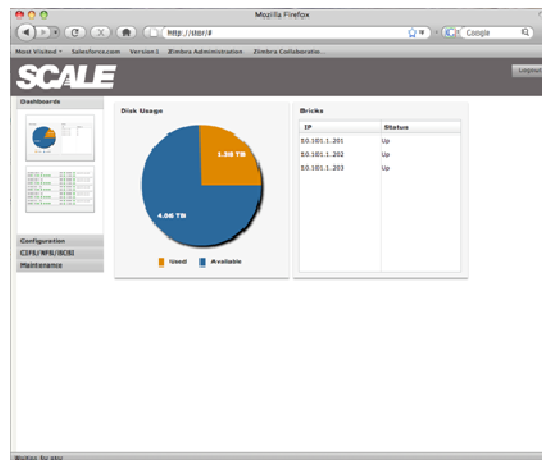
Features	Benefits
1TB (SG100) and 2TB (SG200) configurations	Incremental, as needed storage growth
Scales to more than 2.2 PB	Virtually unlimited capacity
Enterprise-class grid architecture	Easy, simple "plug-and-play" scaling
Migration-less scalability	Zero services or information downtime
Supercomputing core	Proven, enterprise-grade technology you can trust--at an affordable price
No single point of failure	Data & service protection even during drive failure
Self healing	Zero disruption & low maintenance
Single, easy to use management UI	Storage nodes detected and added seamlessly and automatically
No bottlenecks	Data access speeds not jeopardized



Preferred Partner

Enterprise Storage at an Affordable Price.

Scale Computing's Build-a-Grid includes a simple, easy-to-use UI that takes the time-consuming hassle out of managing your storage. Simply "Build-a-Grid" of storage and Scale's management console automatically discovers the new node, adds it to the cluster and begins mirroring and managing your data across the nodes. Data migration is history; services don't go down. In fact, you can pull drives out, trip over cords and still not suffer services or data access losses.



Appliance Specifications

Hardware	Software
(4) Enterprise-grade SATA Drives	LINUX OS
50 MB/sec throughput per node, scales linearly with additional units	Proven HPC file system from IBM
Protocol support: iSCSI, NFS, CIFS/SAMBA	Management
HA Features standard with all configurations	Web (SSL) for management
Standard & Dual Redundant Power Supplies	Serial console for initial set-up only
150w start-up, 100w operating power	
(2) GigE ports per appliance	
Model usable capacities/brick: 1TB (SG100)& 2TB (SG200)	
Form Factor: 1U	